

# Sulfidation of Cadmium at the Nanoscale

Andreu Cabot,<sup>†</sup> Rachel K. Smith,<sup>†</sup> Yadong Yin,<sup>‡</sup> Haimei Zheng,<sup>†</sup> Björn M. Reinhard,<sup>§</sup> Haitao Liu,<sup>⊥</sup> and A. Paul Alivisatos<sup>†,⊥,\*</sup>

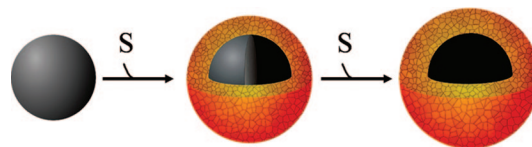
<sup>†</sup>Materials Science Division, Lawrence Berkeley National Laboratory, Berkeley, California 94720, <sup>‡</sup>Department of Chemistry, University of California at Riverside, Riverside, California 92521, <sup>§</sup>Department of Chemistry, Boston University, Boston, Massachusetts 02215, and <sup>⊥</sup>Department of Chemistry, University of California at Berkeley, Berkeley, California 94720

**ABSTRACT** We investigate the evolution of structures that result when spherical Cd nanoparticles of a few hundred nanometers in diameter react with dissolved molecular sulfur species in solution to form hollow CdS. Over a wide range of temperatures and concentrations, we find that rapid Cd diffusion through the growing CdS shell localizes the reaction front at the outermost Cd/S interface, leading to hollow particles when all the Cd is consumed. When we examine partially reacted particles, we find that this system differs significantly from others in which the nanoscale Kirkendall effect has been used to create hollow particles. In previously reported systems, partial reaction creates a hollow particle with a spherically symmetric metal core connected to the outer shell by filaments. In contrast, here we obtain a lower symmetry structure, in which the unreacted metal core and the coalesced vacancies separate into two distinct spherical caps, minimizing the metal/void interface. This pattern of void coalescence is likely to occur in situations where the metal/vacancy self-diffusivities in the core are greater than the diffusivity of the cations through the shell.

**KEYWORDS:** hollow nanoparticle · Kirkendall effect · self-diffusion · diffusion mechanism · CdS · sulfidation

Since the first report in 2004,<sup>1</sup> the formation of hollow nanoparticles *via* the nanoscale Kirkendall effect has been observed in dozens of materials.<sup>2–5</sup> In the simplest scenario, an elemental metallic nanocrystal reacts to form a compound nanoparticle; hollow, polycrystalline nanoparticles result when the diffusion of the cationic species outward is faster than the inward diffusion of the anionic species. Some examples of hollow particles formed in this way include oxides, sulfides, selenides, and phosphides of cobalt, iron, molybdenum, and nickel (*e.g.*, CoO,<sup>1</sup> Co<sub>3</sub>S<sub>4</sub>,<sup>1</sup> Fe<sub>x</sub>O<sub>y</sub>,<sup>3,6</sup> MoO<sub>2</sub>,<sup>7</sup> Ni<sub>2</sub>P,<sup>5</sup> Co<sub>2</sub>P<sup>5</sup>). Fan, Gösele, and Zacharias have written a recent review outlining synthetic developments in this field,<sup>2</sup> as well as describing criteria that can be used to evaluate the possibility that a given system will form hollow particles by this mechanism.

In materials with one or more macroscopic dimensions, like nanowires or films, the Kirkendall effect leads to the formation of multiple voids at the metal–composite interface.<sup>8,9</sup> In nanoparticles, a single void is typically observed in the center of the particle when the reaction is complete, and the particles maintain an overall approximate spherical symmetry through the course of the reaction.<sup>3,10</sup> In such spherical nanostructures, the unreacted metal core remains in the center and is connected to the hollow shell by thin filaments.<sup>1,6</sup> In a very recent report, Nakamura *et al.* already showed that the incomplete oxidation of Ni nanoparticles leads to the formation of partially hollow structures with a single void.<sup>11</sup> On fully oxidized NiO particles, holes were located at off-center positions and nonhomogeneous shell thicknesses were obtained. Here we explore the sulfidation of spherical cadmium crystals to form hollow CdS *via* the nanoscale Kirkendall effect, Figure 1. Cadmium sulfide, having both a direct band gap in the visible region and piezoelectric properties, is particularly suited for optical, optoelectronic, and electromechanical applications. In the cadmium sulfidation reaction, the metal self-diffusion time in the core is much lower than the self-diffusion time of the metal ions through the shell. We show that the structures obtained from the partial sulfidation of Cd particles



**Figure 1.** Schematic of the sulfidation process of Cd nanoparticles. Solid cadmium particles (left) are exposed to elemental sulfur, leading to partially sulfidized structures, with a Cd core remaining inside a polycrystalline CdS shell (center). Longer reaction times lead to fully hollow CdS structures (right).

\*Address correspondence to alivis@berkeley.edu.

Received for review May 6, 2008 and accepted June 11, 2008.

Published online July 22, 2008.  
10.1021/nn800270m CCC: \$40.75

© 2008 American Chemical Society

contain a single off-center void region and a single off-center region of unreacted Cd, both with a spherical cap geometry. Markedly, in spite of the asymmetrical metal distribution in this new type of structure, a homogeneous growth of the CdS shell is observed throughout the entire particle as the sulfidation proceeds to completion. We measured the growth rates of CdS as a function of the reaction temperature and the sulfur concentration and have estimated the Cd self-diffusivity in the CdS shells. This estimate allows for a self-consistent explanation of the mechanism of formation of the Cd/CdS heterostructures; the calculated diffusion coefficient is used to discriminate between the mechanisms of Cd transport through the CdS shell.

## RESULTS AND DISCUSSION

Solid cadmium particles were synthesized by the decomposition of dimethylcadmium in trioctylphosphine oxide (TOPO) at 330 °C under air-free conditions. In the absence of oxidizing elements, dimethylcadmium decomposes to form colloidal Cd<sup>0</sup>. At temperatures below the melting point of cadmium ( $T_m = 321$  °C), cadmium particles appear highly faceted, having hexagonal geometries. Above its melting point, cadmium forms spherical droplets in the liquid phase, and these solidify into spherical Cd particles as the temperature is decreased. The size of the cadmium particles can be tuned in the diameter range between 100 nm and 1 μm by the concentration of the injected solution and the stirring rate.<sup>12</sup> The resulting Cd nanoparticles are monocrystalline, as deduced from both electron diffraction and dark field transmission electron microscopy (TEM) (Supporting Information, Figure 1).

Sulfidation of colloidal Cd crystals was performed by the injection of elemental sulfur dissolved in 1,2-dichlorobenzene into a solution of colloidal Cd. Sulfidation was carried out in the temperature range of 200–300 °C, and with sulfur to cadmium ratios ( $[S]/[Cd]$ ) in the range of 1–12. The actual concentration of sulfur in solution will be lower than the nominal concentration injected, as a perceptible percentage of sulfur may react with the solvent impurities. Moreover, a slight reduction of the sulfur concentration with time is to be expected from the combination of the high vapor pressure of sulfur at the reaction temperature (~1 kPa) and the use of continuous flow of argon in the experimental setup.

Transmission electron microscopy was used to follow the progressive sulfidation of the spherical Cd particles, Figure 2. We observe that, upon sulfur introduction, a uniform and polycrystalline CdS shell forms at the outer surface of the Cd particle. As the sulfidation proceeds, the shell grows outward from the CdS/solution interface, as observed from the evolution of the thickness and the

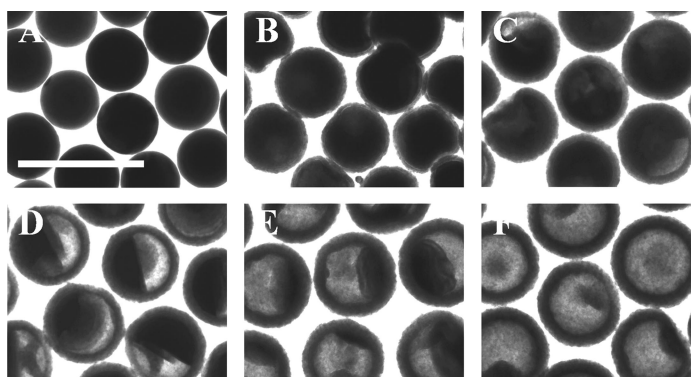


Figure 2. TEM micrographs from six aliquots at different stages of the CdS shell growth, from the initial Cd particles (A) to the final CdS hollow particles (F). The scale bar corresponds to 500 nm. The contrast of the image has been adjusted to enhance the distinction between the hollow and solid components.

outer diameters of the shell, Figure 3. This external growth requires the diffusion of Cd through the CdS shell, and therefore, an inward diffusion of the equivalent number of vacancies follows to counterbalance the outward diffusion of matter. In the initial stages of Cd sulfidation, vacancies coalesce into voids extending all over the Cd/CdS interface, Figure 2B. However, in a slightly advanced stage of sulfidation, vacancies are found to coalesce into a single void with spherical cap shape adhering to one side of the interior hollow CdS shell, Figure 2C–E. In spite of this asymmetric Cd distribution, the spherical CdS shell still grows isotropically. Tilting of the sample holder inside the TEM allows us to confirm that the Cd in the partially converted particles assembles in a spherical cap shape, Figure 4. As the sulfidation proceeds, the Cd core is consumed through its free interface in a similar way as the liquid level in a container is reduced while preserving a flat surface. However, the intuitive image of a molten Cd core inside the shell at the reaction tempera-

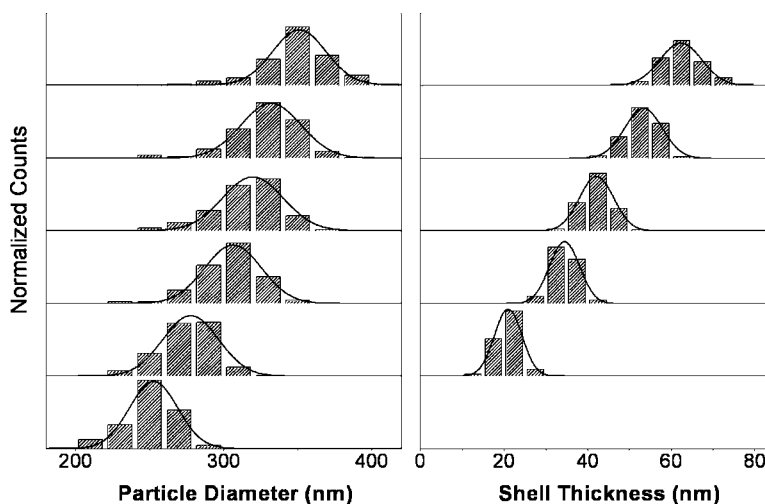
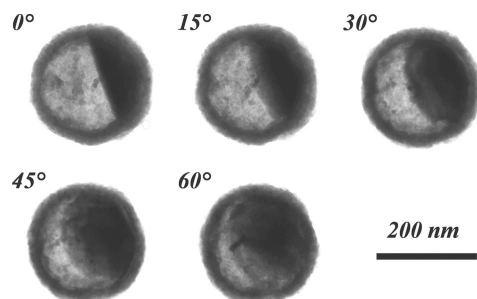


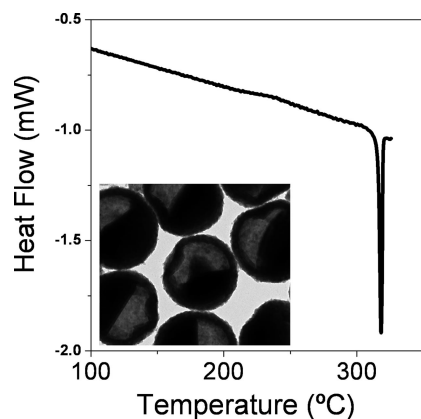
Figure 3. Particle diameter and shell thickness distributions from six aliquots at different stages of the CdS shell growth, from the initial Cd particles (bottom histograms) to the final CdS hollow particles (top histograms).



**Figure 4.** TEM micrographs at different tilting angles of the same partially reacted Cd/CdS particle. The contrast of the image has been adjusted to enhance the distinction between the hollow and solid components.

ture, which then solidifies upon cooling, has been definitively ruled out, using differential scanning calorimetry (DSC) analysis of the intermediate heterostructures. In Figure 5, DSC data show that the melting temperature of the spherical Cd caps inside the CdS shell is approximately equal to that of bulk Cd (321 °C), well above the sulfidation temperatures used (200–300 °C).

It is interesting to consider the complex balance of thermodynamic and kinetic factors at play in the formation of the spherical caps during the partial sulfidation. Three interface energies play a critical role in this system: core/shell, core/void, and void/shell. Here, the coalescence of the Cd into a single spherical cap minimizes the interface between the metal and the surrounding void/medium,<sup>13</sup> Figure 5. This indicates that the metal/void interface is the highest energy interface in the system. Both Cd cations and vacancies must diffuse quickly through the shell to account for the homogeneous feeding of the growing CdS shell. The geometry of the metal core in partially oxidized particles can be thermodynamically directed only for long enough reaction times, as compared to the diffusion time of the core element. If we consider the reaction time to be limited by the diffusivity of the metal through the shell, this condition can be expressed as a



**Figure 5.** Differential scanning calorimetry (DSC) analysis of the intermediate Cd/CdS particles. The endothermic peak at ~320 °C corresponds to the melting of the Cd cores inside of the CdS shells. Inset: TEM micrograph of the partially hollow Cd/CdS nanoparticles analyzed by DSC.

**TABLE 1.** Metal Diffusion Coefficients [ $D = D_0 \exp(-E/kT)$ ]<sup>14</sup>

element	$T_M$ (°C) <sup>a</sup>	$D_0$ (cm <sup>2</sup> s <sup>-1</sup> )	$E$ (eV)	$T$ (°C) <sup>b</sup>	$D_{200}$ (nm <sup>2</sup> s <sup>-1</sup> ) <sup>c</sup>
In	157	3–4	0.8	39–144	~10 <sup>5</sup> ( $T = 150$ °C)
Sn	232	1–20	1.0–1.1	160–228	~10 <sup>3</sup>
Cd	321	0.05–0.7	0.8–0.9	77–315	~10 <sup>4</sup>
Zn	420	0.1–0.6	0.9–1.1	240–418	~10 <sup>2</sup> –10 <sup>3</sup>
Al	660	0.1–2	1.3–1.5	85–643	~10 <sup>-2</sup> –10 <sup>-1</sup>
Cu	1085	0.1–1	2.0–2.2	301–1082	~10 <sup>-10</sup> –10 <sup>-8</sup>
Ni	1455	1–3	2.9–3.1	475–1404	~10 <sup>-8</sup> –10 <sup>-7</sup>
Co	1495	0.2–2	2.7–3.2	623–1472	~10 <sup>-19</sup> –10 <sup>-16</sup>
Fe	1538	0.2–10	2.5–3.2	697–1508	~10 <sup>-20</sup> –10 <sup>-12</sup>
Ti	1668	10 <sup>-7</sup> –10 <sup>-3</sup>	1.3–1.8	690–1583	~10 <sup>-9</sup> –10 <sup>-4</sup>

<sup>a</sup>Melting temperature. <sup>b</sup>Temperature range of the measurement. <sup>c</sup>Extrapolation of the diffusion coefficient to 200 °C.

ratio of self-diffusivities. Consider Arrhenius expressions for both self-diffusivities, with  $D_{0S}$ ,  $D_{0C}$ ,  $E_C$ , and  $E_S$  being the self-diffusivity constants and activation energies of the metal or metal ions through in the core and the shell. The condition for the formation of metal spherical caps instead of bridge-supported cores can be expressed as the following rate between the metal diffusion time in the core ( $t_C$ ) and its diffusion time through the shell ( $t_S$ ):

$$\frac{t_C}{t_S} = A \cdot \frac{D_{0S}}{D_{0C}} \cdot \exp\left(\frac{E_C - E_S}{kT}\right) < 1 \quad (1)$$

where

$$A = \frac{1}{((1 + \theta)^{1/3} - 1)} \quad (2)$$

accounts for the different diffusion length of the metal in the core and the ions in the shell,  $\theta$  being the molar volume ratio between the initial and final structure, also known as the Pilling–Bedworth ratio.

Extrapolation of self-diffusivity values previously reported in the literature suggests that the sulfidation of cadmium should indeed satisfy the conditions of eq 1. The Cd self-diffusivity is estimated to be much faster in the core than through the CdS shell (Table 1). This is consistent with our experimental results, where the metal keeps a thermodynamically favorable shape while supporting an effective and uniform sulfidation reaction. The same argument applies for the oxidation of Zn particles, for example. On the other hand, in the sulfidation and oxidation of Co, and in the oxidation of Fe, the faster self-diffusion of ions through the shell than in the core leads to the formation of kinetically controlled Co/Co<sub>x</sub>S<sub>y</sub> and Fe/Fe<sub>x</sub>O<sub>y</sub> nanostructures, with spherical cores supported by bridges and with very high metal/void interface areas.<sup>1,3</sup>

The self-diffusivity values reported in the literature are measured at temperatures well above those used here, and using macroscopic crystals. Diffusivities strongly depend not only on the temperature but also on the microstructure, composition, and potentially

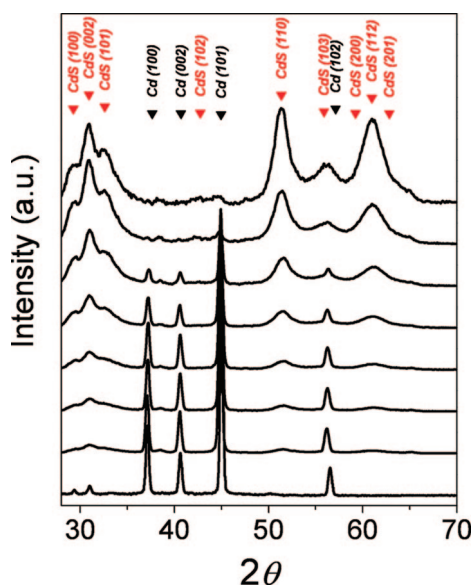


Figure 6. Evolution of the X-ray diffraction patterns of the hollow CdS particles, from the initial Cd particles (bottom pattern) to the final CdS hollow particles (top pattern).

also the overall dimension of the sample. Thus, the self-diffusion values extrapolated from literature values may differ significantly from those in the polycrystalline shells and at the temperatures considered here. Furthermore, the ion self-diffusivity may not be the limiting parameter on the growth/reaction rate, but the reaction time may be much larger due, for example, to a limited supply of the oxidizing element in solution. Here we show that a more comprehensive study of the hollow nanoparticle evolution itself can be used to provide a direct measure of some of the self-diffusivities at work in this experiment.

The present system offers the opportunity to directly measure the kinetics of the sulfidation process at the nanoscale. X-ray diffraction (XRD) was used to quantitatively follow the sulfidation process by removing aliquots at successive times after the sulfur injection.

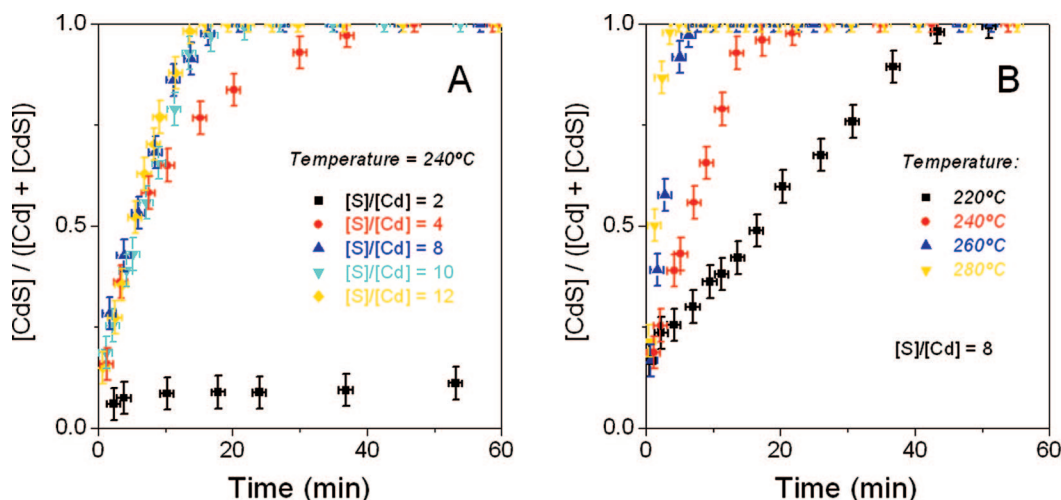


Figure 7. Time evolution of the fraction of CdS formed from the reaction of 350 nm cadmium particles. (A) The reaction temperature is set to 240 °C, while the nominal sulfur concentration is changed as specified in the graph. (B) The nominal sulfur concentration is set to  $[S]/[Cd] = 8$ , while the reaction temperature is changed as specified in the graph.

tion, Figure 6. The CdS shell growth rate can be calculated by monitoring the appearance of CdS as a function of time with a concomitant decrease in the Cd. Figure 7A shows the fraction of CdS obtained from the reaction of 350 nm Cd particles with different nominal sulfur concentrations. It is striking that the reaction rate is strongly affected by small changes in the amount of added sulfur only at low sulfur concentrations. At the crossover of reaction regimes, the sulfur to cadmium ratio is  $[S]/[Cd] = 6$ . At lower sulfur concentrations, we believe the sulfur reaction probability or its diffusion limits the reaction rate. In order to discern between these two possibilities, we can obtain the order of magnitude of the sulfur reactivity. We consider the most abundant molecular form of sulfur in solution to be  $S_8$ .<sup>15</sup> The approximated diffusion constant of these molecules, as given by the Stokes–Einstein relation with a solvent mobility of 0.1 Pa · s, is on the order of  $10^7 \text{ nm}^2 \text{ s}^{-1}$ . At a sulfur to cadmium ratio of  $[S]/[Cd] = 4$ , the complete sulfidation of 350 nm Cd particles takes place in around 40 min at 240 °C. The sulfur concentration in solution,  $[S_8] \sim 0.02 \text{ nm}^{-3}$ , translates into a collision rate of around  $6 \times 10^8 \text{ nm}^{-2} \text{ s}^{-1}$ . From the sulfidation time, we deduce that the flux of Cd through the shell is around 2 atoms  $\text{nm}^{-2} \text{ s}^{-1}$ . Thus the reaction probability of the  $S_8$  molecules probing the surface of the CdS with the diffusing Cd atoms is on the order of  $10^{-7}$ . From this estimation of the order of magnitude of the reaction probability, we conclude that the concentration of sulfur around the particles does not perceptibly change because of its reaction with the Cd, which rules out the S diffusivity as the limiting rate factor. It is therefore the low reaction probability that controls the rate of sulfidation of the Cd particles at sulfur concentrations lower than  $[S]/[Cd] = 6$ .

At higher sulfur concentrations, the shell growth rate is independent of the amount of sulfur in solution. In this reaction regime, the collision frequency is large



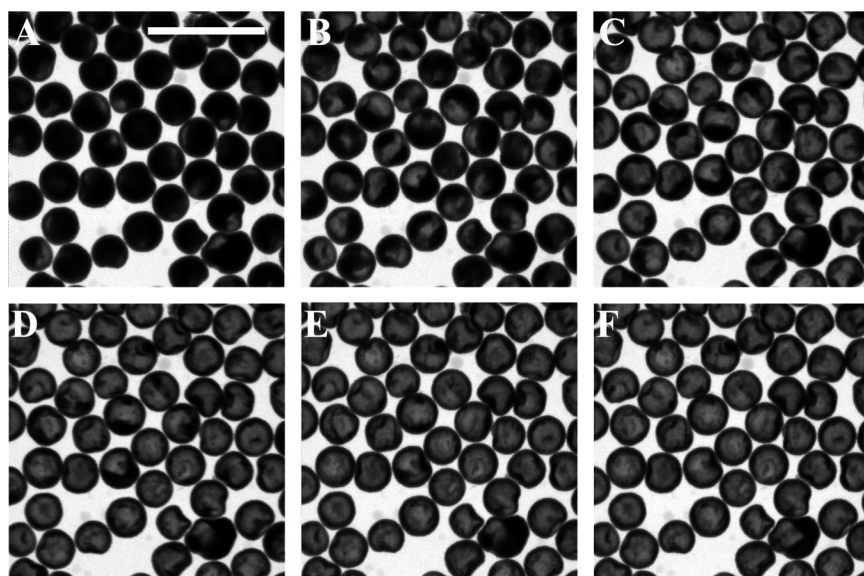


Figure 8. TEM micrographs of different stages of the vaporization of the cadmium cores inside thin CdS shells at 285 °C. Scale bar corresponds to 1  $\mu\text{m}$ .

enough to lead to the prompt reaction of every Cd reaching the shell outer surface, even though the reaction probability is low. This is confirmed by using TEM to monitor *in situ* the disappearance of the Cd core when heated in high vacuum, Figure 8. TEM studies confirm that the Cd core disappears on the same time scale as the growth of the shell. As noted above, the Cd self-diffusion inside the void is very fast when compared with the shell growth rate (Table 1). Thus, we consider the Cd diffusivity through the shell, either in a neutral or in an ionized form, as the limiting rate in this reaction regime.

The oxidation kinetics of metal films controlled by the diffusion of one of the reactants usually results in parabolic rates. By considering the diffusivity of one of the ionized reactants to be driven by local electric fields, Cabrera and Mott have estimated the following parabolic dependence of a metal oxide film growth rate:<sup>16</sup>

$$l^2 = 4D_i\Omega[n(0) - n(l)]t \quad (3)$$

where  $l$  is the thickness of the grown film,  $D_i$  is the diffusion coefficient for metal ions,  $\Omega$  is the volume of oxide grown per metal ion, and  $n(0) - n(l)$  is the difference in the concentration of dissolved diffusing ions between the inner and the outer surface of the film. A similar dependence can be derived when considering the diffusion of neutral species as being driven by concentration gradients. From the general problem of diffusion with discontinuous boundaries, solved by Hermans for the specific case of diffusion with precipitation,<sup>17</sup> the following dependence is obtained:

$$l^2 = 4B^2Dt \quad (4)$$

where  $D$  is the diffusion coefficient of the diffusing substance in the medium, and  $B$  is given by

$$Be^{B^2} \text{erf}(B) = \frac{a}{\sqrt{\pi}b} \quad (5)$$

with  $a$  being the concentration of diffusing particles at  $x = 0$  and  $b$  as the concentration of binding sites.

The time evolution of the Cd to CdS conversion obtained from the reaction of 350 nm Cd particles with a nominal sulfur concentration  $[S]/[Cd] = 8$  is shown in Figure 7B. In Figure 9, the shell thickness is calculated from the measured CdS fraction and is plotted as a function of the square root of the reaction time at different reaction temperatures. At low reaction times, a linear dependence, which flattens at high CdS:Cd ratios, is obtained.

The linear data regimes in Figure 9 were fitted to expressions 1 and 2. The reasonably good fit of the data obtained from the growth of spherical shells to the expressions describing growth rates in a planar geometry is not surprising when considering the moderate increase in the particle diameter with the oxidation process. However, a better estimation of the diffusion coefficients by this method should introduce corrections for this spherical geometry.

To determine the diffusion coefficient from these fits, the concentration of dissolved cadmium in the inner surface was approximated to the concentration of Cd in the CdS lattice. Both Cabrera–Mott and Hermans

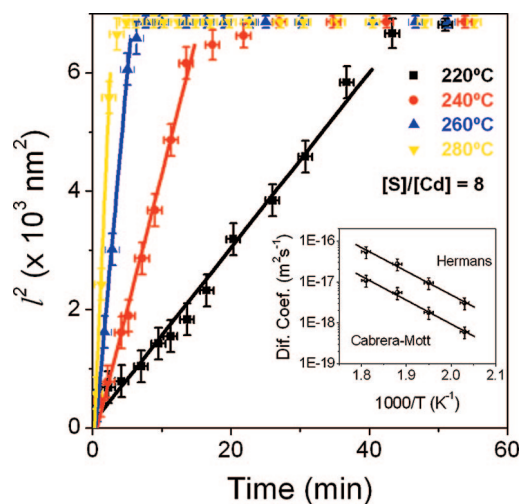


Figure 9. Time dependence of the square of the shell thickness for different reaction temperatures: 220 °C (black), 240 °C (red), 260 °C (blue), and 280 °C (yellow). The nominal concentration of sulfur is set to a ratio  $[S]/[Cd] = 8$ . The lines correspond to linear fittings of the data points. The inset shows the Arrhenius plot of the obtained diffusion coefficients for the two models described in the text.

**TABLE 2. Cd and S Self-Diffusion Coefficients in CdS [ $D = D_0 \exp(-E/kT)$ ]<sup>21</sup>**

reference	diffusing element	T (K)	$D_0$ ( $\text{m}^2 \text{s}^{-1}$ )	E (eV)
present work	Cd	493–553	$1 \times 10^{-6}$	1.1
H. H. Woodbury <sup>22</sup>	Cd	793–1373	$3.4 \times 10^{-4}$	2.0
D. Shaw <sup>23</sup>	Cd	773–973	$6.7 \times 10^{-2}$	2.67
D. Shaw <sup>23</sup>	Cd	973–1123	$5.8 \times 10^{-6}$	1.85
E. D. Jones <sup>24</sup>	Cd	875–1528	$1.2 \times 10^{-4}$	2.3
V. Kumar and F. A. Kroger <sup>25</sup>	Cd	973–1273	$3.3 \times 10^{-6}$	2.0
E. D. Jones <i>et al.</i> <sup>26</sup>	Cd	1053–1550	$4.2 \times 10^{-6}$	1.90
E. D. Jones <i>et al.</i> <sup>26</sup>	Cd	870–1053	5.2	3.18
L. A. Sysoev <i>et al.</i> <sup>27</sup>	Cd	1023–1323		2.4
V. Kumar and F. A. Kroger <sup>25</sup>	S	1073–1173	$1.6 \times 10^{-6}$	2.08

models, considering charged or neutral diffusing species, respectively, lead to very similar Cd self-diffusivities with identical temperature dependences (inset, Figure 9). From the diffusion coefficients obtained for the different reaction temperatures, the following estimation of the Arrhenius dependence of the Cd diffusion coefficient ( $\text{m}^2 \text{s}^{-1}$ ) was obtained:

$$D = D_0 \exp(-E/kT) = 1 \times 10^{-6} \exp(1.1 \text{ eV} / kT)$$

The values reported in the literature for the diffusivity of Cd and S in CdS crystal lattices are compared to those obtained in the present work in Table 2. The pre-exponential factor,  $D_0$ , obtained here is inside the large range of values previously measured for a variety of systems. The activation energy calculated in the present work is just half of that reported in previous studies. Such low activation energy is consistent with the polycrystalline nature of the CdS shells. It is well-known that diffusion coefficients in nanocrystalline materials can be orders of magnitude larger than in their bulk counterparts.<sup>18</sup> Grain boundaries provide easy paths for ion movement, and thus activation energies for grain boundary diffusion are often much lower than those for intrinsic bulk lattice diffusion.<sup>19,20</sup> Therefore, our studies strongly suggest grain boundary diffusion of ionized or neutral cadmium as the dominant mecha-

nism for cadmium transport through the shell. This diffusion mechanism is associated with a strong dependence of the growth rate on the shell nanostructure. Furthermore, the Cd diffusivity through the shell obtained by our estimation is approximately 4 orders of magnitude slower than the cadmium self-diffusivity. We believe this large difference to be the reason behind the thermodynamic accommodation of the core inside the shell.

## CONCLUSIONS

We have investigated the sulfidation reaction of 350 nm Cd particles. Our studies reveal that Cd diffuses more rapidly than S through the polycrystalline shells that result from the reaction of Cd with S. This high Cd diffusivity leads to the accumulation of vacancies at the metal/sulfide interface and eventually to the decohesion of the growing CdS shell. Through control of the reaction time, reaction temperature, and Cd/S ratio, the particle morphology could be shifted from metal–void–shell structures containing the unreacted metal localized in a single core attached to the CdS shell to completely hollow CdS structures. In contrast to previously described systems, here in partially sulfided Cd particles, a single Cd core is observed and its interface with the void is minimized with a spherical cap geometry. This particular arrangement of the core metal is explained by the different time scales of Cd diffusion inside the particle and across the shell. Such a system offers a unique opportunity to estimate diffusion coefficients at relatively low temperatures. At high sulfur concentrations, the growth rate is limited by the Cd diffusion rate through the shell, which was estimated to be  $D = 1 \times 10^{-6} \exp(1.1 \text{ eV}/kT)$ . The activation energy obtained from this approach is lower than that measured at higher temperatures for lattice diffusion. This deviation is consistent with the polycrystalline nature of the formed CdS shells. At the same time, the estimated Cd self-diffusion in the CdS shells is much lower than the Cd metal self-diffusion. This is consistent with the considered mechanism controlling the unreacted metal geometry and the simultaneous homogeneous growth of the shell.

## METHODS

**Synthesis.** Solid cadmium particles were obtained by the decomposition of dimethylcadmium (97%, Strem) in trioctylphosphine oxide (TOPO, 99%, Sigma-Aldrich). Dimethylcadmium was distilled prior to use and stored below its melting point in an argon-filled glovebox. In a typical synthesis, 8 g of TOPO was heated inside a three-neck flask to 60 °C under vacuum for 30 min. While keeping the solution under argon (99.999%), the temperature was raised to 330 °C. A precursor solution of 0.1 g of dimethylcadmium in 1 mL of trioctylphosphine (TOP, 97%, Strem) was prepared separately under Ar. This mixture was rapidly injected through a septum into the hot solution with vigorous stirring. The decomposition of the dimethylcadmium is instantaneous and leads to the formation of colloidal Cd particles. When formed above the cadmium melting temperature ( $T_m = 321 \text{ °C}$ ), these Cd particles have a spherical symmetry. Following

the injection, the temperature dropped to around 320 °C and then slowly recovered to 330 °C. The solution was kept at a temperature between 320 and 330 °C for around 30s and was then rapidly decreased to quench the spherical geometry of the liquid drops.

To sulfidize the colloidal Cd crystals, a 30% sulfur solution was prepared inside the glovebox by dissolving 0.4 g of elemental sulfur (99.998%, Aldrich) in 10 mL of anhydrous 1,2-dichlorobenzene (99%, Aldrich). Dissolution was carried out using a heated ultrasound sonicator, while keeping the sample closed in air-free conditions inside a vial accessible through a septum. The sulfur solution has a dark-brown color. Between 0.5 and 6.7 mL of this solution was injected through a septum into the hot solution containing the Cd crystals. The reaction temperature was set between 200 and 300 °C. After injection, the temperature drops a certain amount, depending on the injected vol-

ume, but is quickly raised as part of the injected dichlorobenzene is removed by evaporation. The sulfidation requires anywhere from a few minutes to hours and can be qualitatively monitored from the solution's change in color from gray to orange.

**Characterization.** The crystal structure of the samples was characterized using powder X-ray diffraction. XRD analyses were obtained on a Bruker AXS diffractometer using Co K $\alpha$  radiation (1.79026 Å) and a general area detector. The instrument resolution was 0.05° in 2 $\theta$ , and the acquisition time for each sample was around 1 h. XRD samples were prepared in air by depositing the precipitated particles on a quartz substrate. XRD was also used to quantitatively follow the sulfidation process. Then, 0.3 mL aliquots were removed through the septum at successive times after the sulfur injection. These aliquots were immediately dissolved in chloroform at room temperature and cleaned by centrifugation to remove excess sulfur in solution. The dried samples were immediately characterized by means of XRD and TEM. For the purpose of a quantitative analysis of the cadmium to cadmium sulfide conversion, we integrated the XRD diffraction patterns obtained from the analysis of the successive aliquots. We compared the area of the CdS (100), (002), and (101) diffraction peaks with that of the (101) Cd peak. A sample containing 50% of as-synthesized Cd particles and 50% of fully reacted CdS hollow particles was used as a reference to determine the ratio of the X-ray diffraction factors for the mentioned lattice interspacings of Cd and CdS. This ratio (0.275) was used to quantitatively follow the Cd to CdS conversion from the integrated areas:  $[CdS]/([Cd] + [CdS]) = A_{CdS}/(0.275 \times A_{Cd} + A_{CdS})$ .

TEM micrographs were obtained using a Tecnai G2 S-Twin electron microscope (200 kV). TEM samples were prepared by placing a drop of the colloidal solution containing the nanoparticles onto a carbon-coated copper grid at room temperature and ambient atmosphere. Only the grid containing the initial cadmium nanoparticles (Figure 1A) was prepared and mounted in the TEM holder under an argon atmosphere. This sample was quickly transferred into the TEM, reducing its air exposure to around 20 s. The *in situ* TEM analysis was conducted using a JEOL 3010 equipped with a heating sample holder. Samples were deposited on silicon nitride membranes and heated in an ultra-high vacuum inside the TEM.

**Acknowledgment.** This work was supported by the Director, Office of Science, Office of Basic Energy Sciences, of the U.S. Department of Energy under Contract No. DE-AC02-05CH11231, and by the Air Force Office of Scientific Research under Award No. FA-9550-07-1-0334. The authors acknowledge support of the National Center for Electron Microscopy at Lawrence Berkeley National Laboratory, which is also supported by the U.S. Department of Energy under Contract No. DE-AC02-05CH11231.

**Supporting Information Available:** Bright- and dark-field TEM micrographs with the corresponding electron diffraction patterns of the precursor Cd particles, TEM micrographs at different tilting angles of Cd/CdTe heterostructures, Arrhenius plot of the diffusion coefficients for Cd, S, and other elements in CdS. This material is available free of charge via the Internet at <http://pubs.acs.org>.

## REFERENCES AND NOTES

- Yin, Y.; Rioux, R. M.; Erdonmez, C. K.; Hughes, S.; Somorjai, G. A.; Alivisatos, A. P. Formation of Hollow Nanocrystals Through the Nanoscale Kirkendall Effect. *Science* **2004**, *304*, 711–714.
- Fan, H.-J.; Gösele, U.; Zacharias, M. Formation of Nanotubes and Hollow Nanoparticles Based on Kirkendall and Diffusion Processes: A Review. *Small* **2007**, *3*, 1660–1671.
- Cabot, A.; Puentes, V. F.; Shevchenko, E.; Yin, Y.; Balcells, L.; Marcus, M. A.; Hughes, S. M.; Alivisatos, A. P. Vacancy Coalescence During Oxidation of Iron Nanoparticles. *J. Am. Chem. Soc.* **2007**, *129*, 10358–10359.
- Liu, B.; Zeng, H. C. Fabrication of ZnO “Dandelions” via a Modified Kirkendall Process. *J. Am. Chem. Soc.* **2004**, *126*, 16744–16746.
- Chiang, R.-K.; Chiang, R.-T. Formation of Hollow Ni<sub>2</sub>P Nanoparticles Based on the Nanoscale Kirkendall Effect. *Inorg. Chem.* **2007**, *46*, 369–371.
- Wang, C. M.; Baer, D. R.; Thomas, L. E.; Amonette, J. E.; Antony, J.; Qiang, Y.; Duscher, G. Void Formation During Early Stages of Passivation: Initial Oxidation of Iron Nanoparticles at Room Temperature. *J. Appl. Phys.* **2005**, *98*, 094308.
- Guo, C. H.; Zhang, G. J.; Shen, Z. R.; Sun, P. C.; Yuan, Z. Y.; Jin, Q. H.; Li, B. H.; Ding, D. T.; Chen, T. H. Hydrothermal Synthesis and Formation Mechanism of Micrometer-Sized MoO<sub>2</sub> Hollow Spheres. *Chin. J. Chem. Phys.* **2006**, *19*, 543–548.
- Peng, H. L.; Xie, C.; Schoen, D. T.; McIlwrath, K.; Zhang, X. F.; Cui, Y. Ordered Vacancy Compounds and Nanotube Formation in CuInSe<sub>2</sub>–CdS Core–Shell Nanowires. *Nano Lett.* **2007**, *7*, 3734–3738.
- Fan, H.-J.; Knez, M.; Scholz, R.; Hesse, D.; Nielsch, K.; Zacharias, M.; Gösele, U. Influence of Surface Diffusion on the Formation of Hollow Nanostructures Induced by the Kirkendall Effect: The Basic Concept. *Nano Lett.* **2007**, *7*, 993–997.
- Yin, Y.; Erdonmez, C. K.; Cabot, A.; Hughes, S.; Alivisatos, A. P. Colloidal Synthesis of Hollow Cobalt Sulfide Nanocrystals. *Adv. Funct. Mater.* **2006**, *16*, 1389–1399.
- Nakamura, R.; Lee, J. G.; Mori, H.; Nakajima, H. Oxidation Behaviour of Ni Nanoparticles and Formation Process of Hollow NiO. *Philos. Mag.* **2008**, *88*, 257–264.
- Wang, Y. L.; Xia, Y. N. Bottom-Up and Top-Down Approaches to the Synthesis of Monodispersed Spherical Colloids of Low Melting-Point Metals. *Nano Lett.* **2004**, *4*, 2047–2050.
- We acknowledge that, as these structures are prepared in the solution phase at moderate temperatures and with evidence that these shells are not monocrystalline, there may not be a true void inside of these structures; surfactant and solvent may be present within.
- Mehrer, H.; Stolice, N.; Stolwijk, N. A. Diffusion in Solid Metals and Alloys. In *Landolt-Börnstein, Group III*; Springer-Verlag: Berlin, 1990; Vol. 26, Chapter 2.
- Meyer, B. Elemental Sulfur. *Chem. Rev.* **1976**, *76*, 367–388.
- Cabrera, N.; Mott, N. F. Theory of the Oxidation of Metals. *Rep. Prog. Phys.* **1948**, *12*, 163–184.
- Hermans, J. J. Diffusion with Discontinuous Boundary. *J. Colloid Sci.* **1947**, *2*, 387–398.
- Horváth, J.; Birringer, R.; Gleiter, H. Diffusion in Nanocrystalline Material. *Solid State Commun.* **1987**, *62*, 319–322.
- Fromhold, J. A. T. *Theory of Metal Oxidation*; North-Holland: Amsterdam, 1976; Vol. 1, p 275.
- Fehlner, F. P. *Low-Temperature Oxidation*; Wiley-Interscience: New York, 1986; p 71.
- Dutt, M. B.; Sharma, B. L. Diffusion in Compound Semiconductors. In *Landolt-Börnstein, Group III*; Springer-Verlag: Berlin, 1998; Vol. 33A, Chapter 3.
- Woodbury, H. H. Diffusion of Cd in CdS. *Phys. Rev. A* **1964**, *134*, A492–A498.
- Shaw, D. The Self-Diffusion of Cd in CdS. *J. Phys. C* **1984**, *17*, 4759–4782.
- Jones, E. D. Measurement of Self-Diffusion of Cadmium into Cadmium Sulfide Using Radiotracer Techniques. *J. Phys. Chem. Solids* **1972**, *33*, 2063–2069.
- Kumar, V.; Kröger, F. A. Self-Diffusion and Defect Structure of Cadmium Sulfide. *J. Solid State Chem.* **1971**, *3*, 387–400.
- Jones, E. D.; Stewart, N. M.; Thambipillai, V. Self-Diffusion of Cadmium into Cadmium Sulfide. *J. Cryst. Growth* **1989**, *96*, 453–455.
- Sysoev, L. A.; Gelfman, A. Y.; Kovaleva, A. D.; Kravchenko, N. G. Measurements of the Coefficients of Self Diffusion of Sulfur in CdS Microcrystals. *Izv. Akad. Nauk SSSR Neorg. Mater.* **1969**, *5*, 2208–2209.